

UTS Insearch Offshore Webinar Series

Student Support and Welfare

**Facilitated by Mariam Kartikatresni
Country Director, Indonesia**



Student Support and Welfare

What we'll cover today



Student Welfare



Student Centre



Student Support



Q&A

Meet our presenters



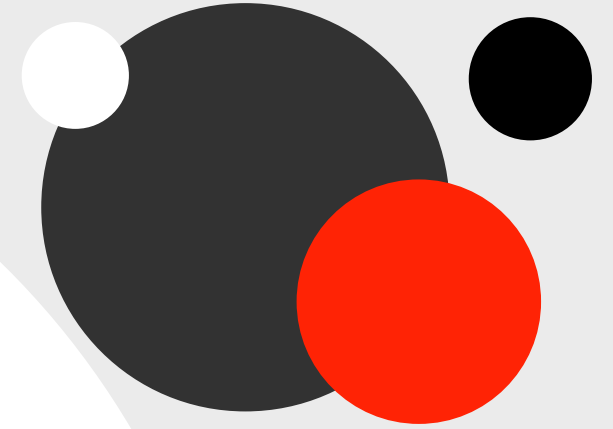
Robert Brennan
Student Welfare
Team Leader



Beenu Dhingha
Student Centre
Team Leader



Zoe Wang
Study Success Advisor
Team Leader





Q&A
with Genevieve
Carruthers
and your
Partner Managers

Who to contact

Welfare and Accommodation

+61 2 9218 8624

Welfare – Genevieve Carruthers

+61 426248614

welfare@Insearch.edu.au

Accommodation – Aima Waheed

+61 419 224 861

accommodation@Insearch.edu.au

Critical incident – Robert Brennan

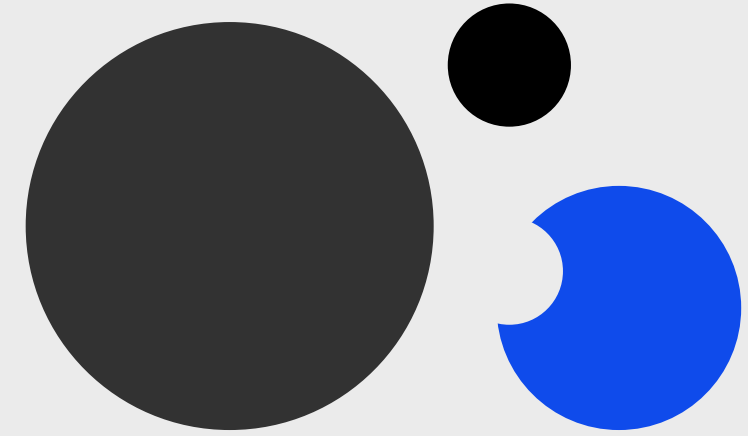
+61 411 306 495

Or your Partner Manager



2020 important dates

Academic programs

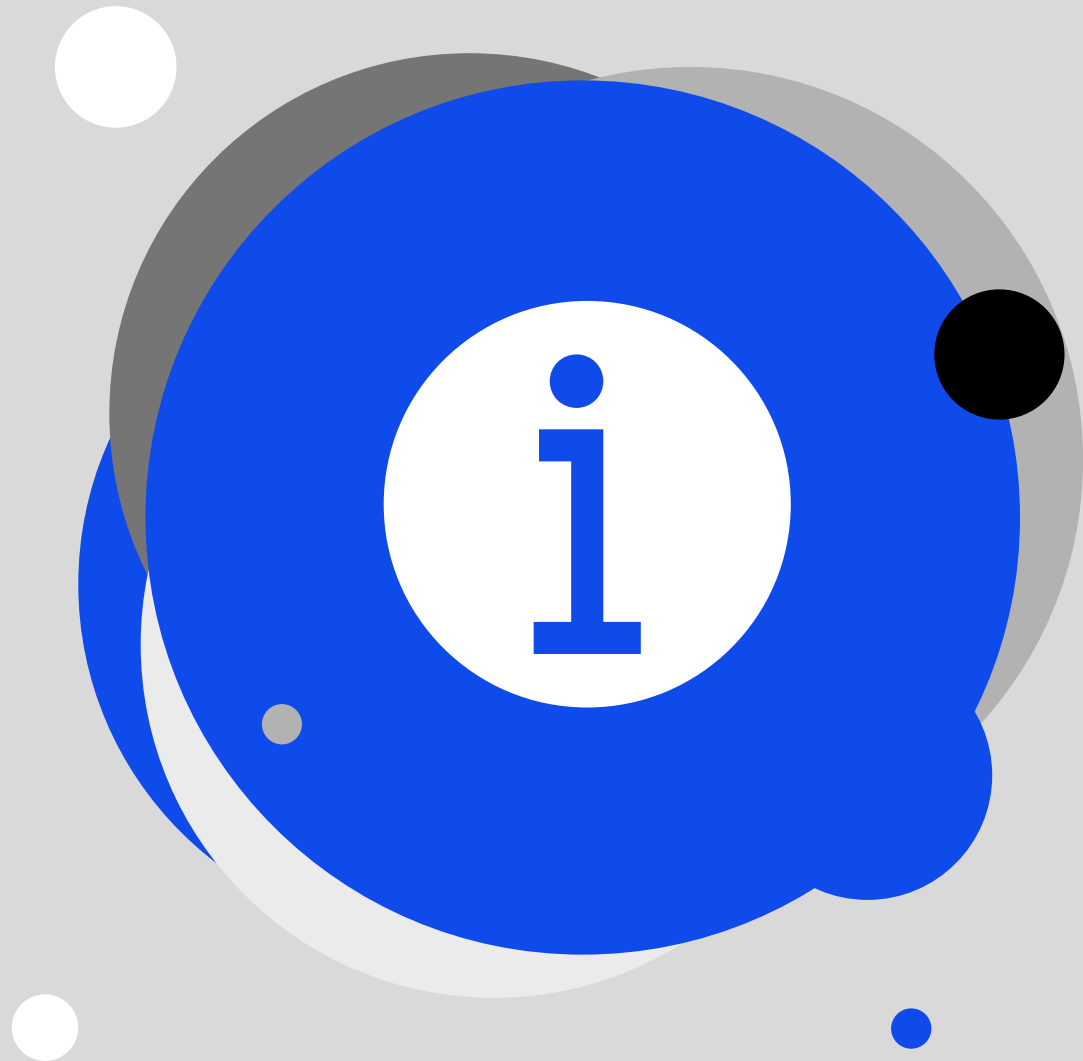


Semester 2		Semester 3	
Commences	22 June	Commences	6 October
Orientation	22-26 June	Orientation	6-9 October
Census date	24 July	Census date	6 November



Your feedback counts

**Please take our quick poll survey
so we can continue to improve
our webinar experience!**



Keep **updated!**

For all our latest updates go to:

insearch.edu.au/au/coronavirus

[Insearch.edu.au/remote-learning](https://insearch.edu.au/remote-learning)



Where to find training material

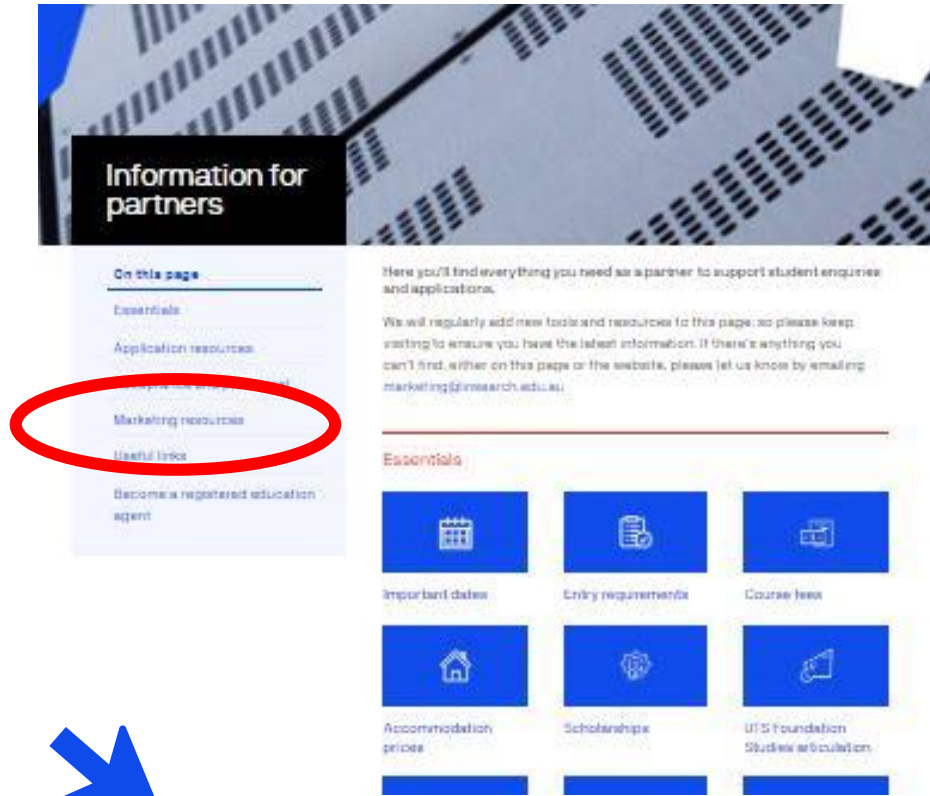
The screenshot displays the UTS Insearch website interface. At the top, a dark navigation bar contains the following links: Courses & programs, Why choose UTS Insearch, How to apply, Student life, About, and Contact us. On the right side of this bar are search and globe icons.

The main content area features an 'Alumni' section on the left with the headline 'From limited English to high flying lawyer' and a video player showing a man smiling. To the right is a 'News' section with a date '03 October 2018' and the headline 'Making the most of STUVAC: How to have a killer study plan for the HSC'.

The footer is divided into several columns:

- Enquire** (with an envelope icon)
- How to** (with a pencil icon)
- Areas of study**: English Language, Business, Communication, Design & Architecture, Engineering, Information Technology, Science.
- Information about**: Who we are, Alumni, Publications, Scholarships, International Campuses, Careers, Find an agent.
- Staff and students**: Student extranet, eStudent, Staff Webmail, Staff Intranet, UTS Email, UTS Online, **Channel Partners** (circled in red).
- Connect with us**: 1800 896 994 (within Australia), +61 2 9218 8700 (International), and social media icons for Facebook, Twitter, Youku, YouTube, LinkedIn, Weibo, and Instagram.

Where to find training material



insearch.edu.au/au/information-for-partners/marketing-resources/training-material



Thank you

Insearch Limited - ABN 39 001 425 065
UTS Insearch CRICOS provider code: 00859D | UTS CRICOS provider code: 00099F
Insearch Limited (UTS Insearch) is a controlled entity of the University of Technology
Sydney (UTS), and a registered private higher education provider of pathways to UTS.