



**Thanks for joining our
Student Support and Welfare
Webinar!**

We'll be starting in a few moments...



Student Support and Welfare

What we'll cover today



Student Welfare



Student Centre

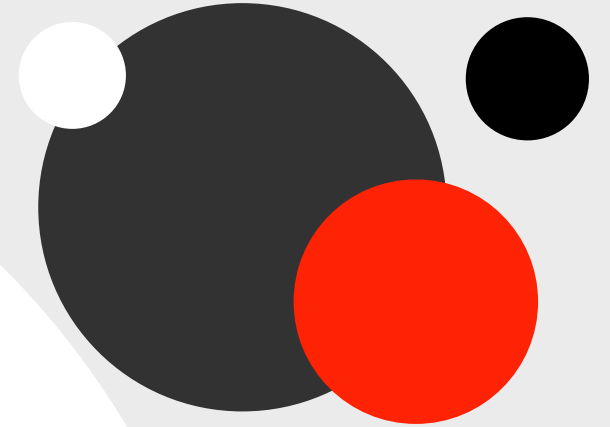


Student Support



Q&A

Meet our presenters



Robert Brennan
Student Welfare
Team Leader



Beenu Dhingha
Student Centre
Team Leader



Zoe Wang
Study Success Advisor
Team Leader



Q&A
with Genevieve
Carruthers
and your
Partner Managers

Who to contact

Welfare and Accommodation

+61 2 9218 8624

Welfare – Genevieve Carruthers

+61 426248614

welfare@Insearch.edu.au

Accommodation – Aima Waheed

+61 419 224 861

accommodation@Insearch.edu.au

Critical incident – Robert Brennan

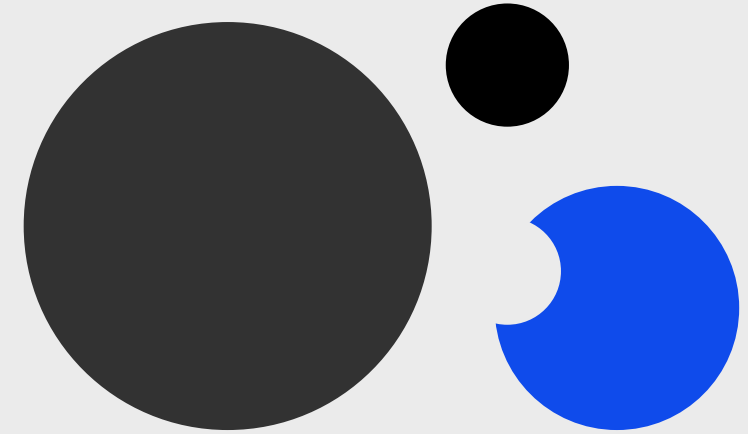
+61 411 306 495

Or your Partner Manager



2020 important dates

Academic programs



Semester 2		Semester 3	
Commences	22 June	Commences	6 October
Orientation	22-26 June	Orientation	6-9 October
Census date	24 July	Census date	6 November



Your feedback counts

**Please take our quick poll survey
so we can continue to improve
our webinar experience!**



Keep **updated!**

For all our latest updates go to:

insearch.edu.au/au/coronavirus

[Insearch.edu.au/remote-learning](https://insearch.edu.au/remote-learning)



Where to find training material

The screenshot displays the UTS Insearch website interface. At the top, a dark navigation bar contains the following links: Courses & programs, Why choose UTS Insearch, How to apply, Student life, About, and Contact us. On the right side of this bar are search and globe icons.

The main content area features a dark sidebar on the left with the heading "Alumni" and a sub-heading "From limited English to high flying lawyer". Below this is a paragraph: "When UTS law graduate Riyadh Alhabshan first arrived to study in Sydney, he could barely speak a word of English. Fast forward several years on and Riyadh is living the dream, working as a top corporate lawyer for a global company." To the right of the text is a video player showing a man smiling, with a play button icon overlaid.

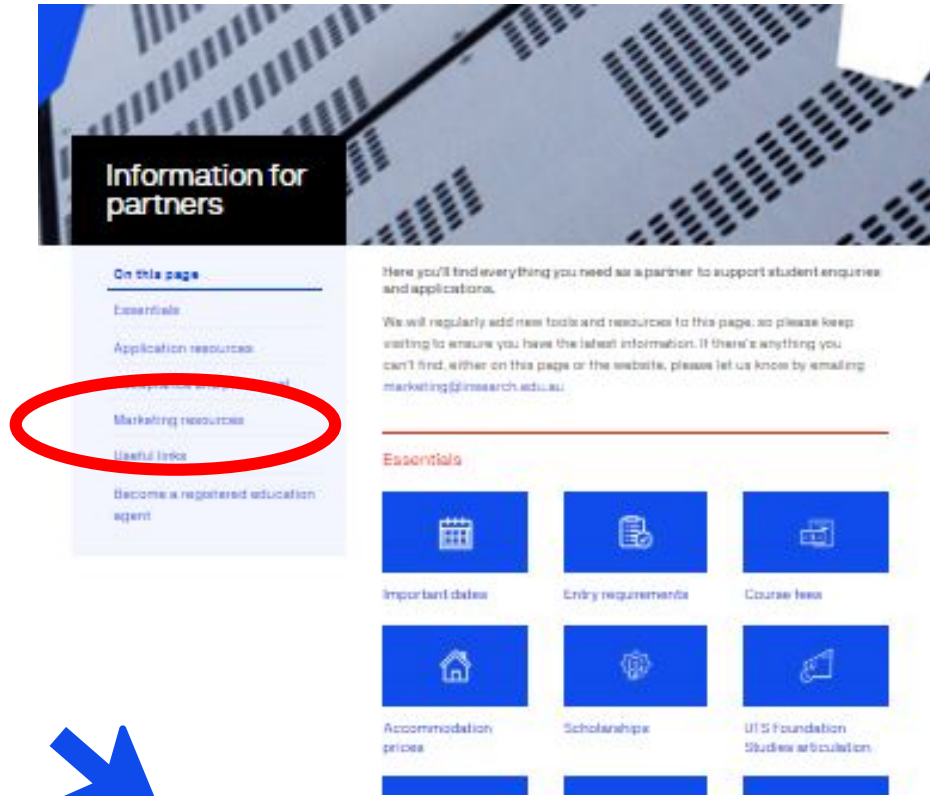
On the right side of the main content area, there is a "News" section with a date "03 October 2018" and a headline: "Making the most of STUVAC: How to have a killer study plan for the HSC". Below the headline is a sub-headline: "We're going to show you how to..."

At the bottom of the page, a dark footer contains several columns of links. On the far left, there are two red buttons: "Enquire" (with an envelope icon) and "How to" (with a pencil icon). The main footer area is divided into five columns:

- Areas of study:** English Language, Business, Communication, Design & Architecture, Engineering, Information Technology, Science.
- Information about:** Who we are, Alumni, Publications, Scholarships, International Campuses, Careers, Find an agent.
- Staff and students:** Student extranet, eStudent, Staff Webmail, Staff Intranet, UTS Email, UTS Online, **Channel Partners** (circled in red).
- Connect with us:** 1800 896 994 (within Australia), +61 2 9218 8700 (International).
- Social media icons:** Facebook, Twitter, Youku, YouTube, LinkedIn, Weibo, Snapchat, Instagram.

A URL is visible at the bottom left: <https://www.insearch.edu.au/information-for-partners>

Where to find training material



insearch.edu.au/au/information-for-partners/marketing-resources/training-material



Keep your questions coming!

Our Q&A will close in five minutes