

# Sydney Visitor Guide

Exploring Sydney and surrounds on public transport

## What's inside?

- Opal information
- Handy network map
- Sightseeing ideas
- Transport information



 **Transport**  
transportnsw.info

## Public transport makes visiting easier

Whether you want to see the sights in Sydney, or explore north to Newcastle, west to the Blue Mountains or south to Wollongong and the Southern Highlands, it's all so easy on public transport.

Our transport network includes trains, buses, ferries and light rail across an area bigger than Switzerland, Holland or Taiwan. All you need is an Opal card to use it.

## Opal is your ticket to public transport

An Opal card is a smartcard that you keep and reuse. You load value onto your card to pay as you go for travel on trains, buses, ferries and light rail.



Adult Opal cards are for customers aged 16 years and over who normally pay full fare.


Child/Youth Opal cards are for customers aged 4–15 years inclusive and customers aged 16 and over with a NSW/ACT Secondary Student Concession Card.

## Quick guide to get started

- 1 Pick up an Adult or Child/Youth Opal card and add value at an Opal retailer 
- 2 Look for nearby train, bus, ferry or light rail services 
- 3 Tap on to start your trip. Tap off to finish your trip to pay the correct fare 



## How to top up

- **Opal Travel app**  
Top up anywhere with the touch of a button. Download Opal Travel from the App Store or Google Play.
- **Opal top up machines**  
Top up on the go at selected stations and wharves across the Opal network.
- **Opal retailers**  
Look for the Opal symbol  at retailers nearby or visit [retailers.opal.com.au](http://retailers.opal.com.au)

## Daily and weekly travel caps

	Daily Cap	Weekly Cap	Sunday Cap
Adult	\$15.40	\$61.60	\$2.60
Child/Youth, Concession	\$7.70	\$30.80	\$2.60
Gold Senior/Pensioner	\$2.50	\$17.50	\$2.50



### Opal single trip tickets

Single-use tickets for train, ferry, light rail and bus trips within the Opal network.

If you have a choice you're better off with an Opal card, the fares are lower and capped each day.

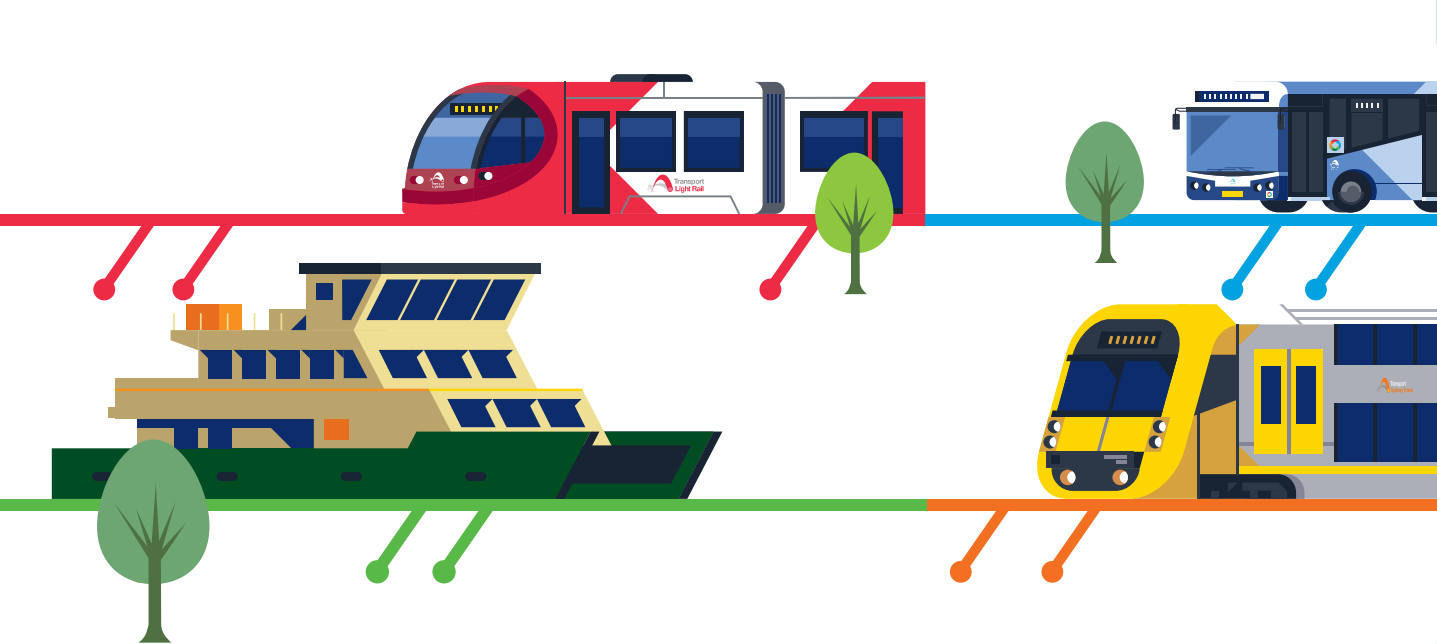


### Travel to the Airport

When travelling to or from Sydney's Domestic and International Airports make sure you have enough value on your Opal card to cover your fares and the Sydney Airport station access fee. For all up to date fees visit [transportnsw.info/airport](http://transportnsw.info/airport)

\* Excludes Sydney Airport station access fee. Sydney Airport stations are privately owned.

The Opal week runs from Monday to Sunday. Fares correct as at July 2017 and are subject to change.



## Opal benefits

- Never pay more than \$15.40 a day**  
Travel all day on trains, buses, ferries and light rail and pay no more than \$15.40 a day for adults, or \$7.70 a day for children.\*
- Never pay more than \$61.60 a week**  
With Opal your fares are capped each week at \$61.60 for adults, or \$30.80 a week for children. The Opal week runs from Monday to Sunday.\*
- Never pay more than \$2.60 on Sundays**  
Fares are capped at \$2.60 every Sunday for all Opal customers.\*
- \$2 transfer discount**  
\$2 discount for every transfer between modes (train, bus, ferry, light rail) as part of one journey within 60 minutes from last tap off.†
- Earn weekly travel rewards**  
After eight paid journeys with Opal you reach the Weekly Travel Reward and enjoy half price trips.^
- Save 30% with off-peak train fares**  
Sleep in, avoid rush hour and save on your train fares. With Opal, a 30% discount applies to all train journeys made on weekends, public holidays and for travel outside of peak hours:

Sydney Trains 7am-9am and 4pm-6.30pm weekdays  
NSW TrainLink 6am-8am and 4pm-6.30pm weekdays

Opal is the affordable way to see Sydney whether you are staying for one week or one day.

\* Excludes Sydney Airport station access fee. Sydney Airport stations are privately owned.  
† \$1 discount for Child/Youth, Concession and Gold Senior/Pensioner Opal card customers.

^ To commence a new journey, you must wait 60 minutes after the previous tap off. Opal week runs Monday to Sunday. Some exceptions apply, see [opal.com.au](https://www.opal.com.au) for details.

## Handy travel apps

Travel like a local with the help of these free public transport apps.



**Opal Travel (official)**  
Top up your Opal card, real-time trip planning and stop alert notifications.



**TripGo**  
Plan trips that combine transport with taxis and other modes.



**TripView**  
Real-time train, bus, ferry and light rail timetable information.



**Moovit**  
Real-time public transport service tracking and stop alerts.



**Transit**  
Trip planning, offline timetables, maps, service alerts and more.



**TripTastic**  
Real-time public transport service tracking and alerts (iOS only).



**NextThere**  
Find your next transport service and follow your journey live (iOS only).



**Arrivo**  
Real-time public transport service tracking and alerts (Android only).

Download from Google Play and the App Store, or find out more at [transportnsw.info/apps](https://www.transportnsw.info/apps).



## Want to find out more?

For transport information including trip planning tools [transportnsw.info](https://www.transportnsw.info)

For more about Opal [opal.com.au](https://www.opal.com.au)

For ideas on where to go [sydney.com](https://www.sydney.com) and [visitnsw.com](https://www.visitnsw.com)

## Want help in your language?

Call the Translating and Interpreting Service (TIS) on **131 450**.

如果您需要中文帮助，您可以拨打笔译和传译服务 Translating and Interpreting Service (TIS) 的电话 **131 450**。

한국어로 도움을 원하시면, 통번역 서비스 (TIS) **131 450** 번으로 전화하십시오.

あなたの母国語での補助は、電話**131 450**の翻訳通訳サービスにおかけ下さい。

Um Hilfe in Ihrer Sprache zu erhalten, rufen Sie den Übersetzer-und Dolmetscherdienst unter **131 450** an.

Appelez le Service de traduction et d'interprétation ou TIS (Translating & Interpreting Service) au **131 450** pour demander de l'assistance dans votre langue.

Per ricevere assistenza in italiano, chiamate il Servizio Traduttori e Interpreti (TIS) al numero **131 450**.

### It's easy to travel with us



**Plan your trip**  
Visit [transportnsw.info](https://www.transportnsw.info)



**Opal is your ticket to travel**  
Get it before you travel from a shop nearby or visit [opal.com.au](https://www.opal.com.au)

# Public transport network

Where Opal can take you

## Exploring Sydney and surrounds

Whether you're here for a weekend or a week, there's so much to see and do. Here's just a handful of sightseeing ideas that are all easy to get to on public transport.



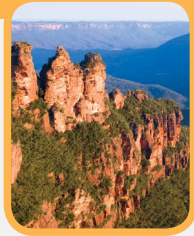
### Sydney's beaches

World-famous Bondi Beach is just a short bus ride from the centre of the city. And it's just one of 70 spectacular beaches across Sydney – including Coogee, Tamarama, Palm Beach and Manly Beach – that are easy to reach by public transport.



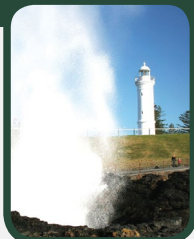
### Newcastle

With a working harbour nestled among beautiful beaches, Newcastle blends cosmopolitan with relaxation in a uniquely Australian way. Newcastle is easy to reach by train from Sydney, and there's plenty of stunning scenery to take in along the way.



### Blue Mountains

If you're here for a few days, it's worth making a trip out to the World Heritage listed Blue Mountains. Regular train services run from Central to Katoomba, and connecting local buses can take you right to the attractions.



### Kiama

Another idea for a great day trip by train is Kiama, a seaside town on the South Coast. When seas are running from the south-east, great plumes of water erupt from the Blowhole. And with lots of picnic spots and parks, it makes for a memorable day out.



### Taronga Zoo

If you haven't seen any koalas or kangaroos yet, Taronga Zoo is just a short ferry ride from Circular Quay. As well as 4,000 types of animals, it has breathtaking views of Sydney Harbour. Buy your zoo entry ticket at Circular Quay.



### Sydney Harbour

Seeing the Harbour from the water is a must when visiting Sydney. From Circular Quay you can take the ferry to Kirribilli, Manly, Watsons Bay, Balmain, Parramatta and dozens of other dazzling destinations.

