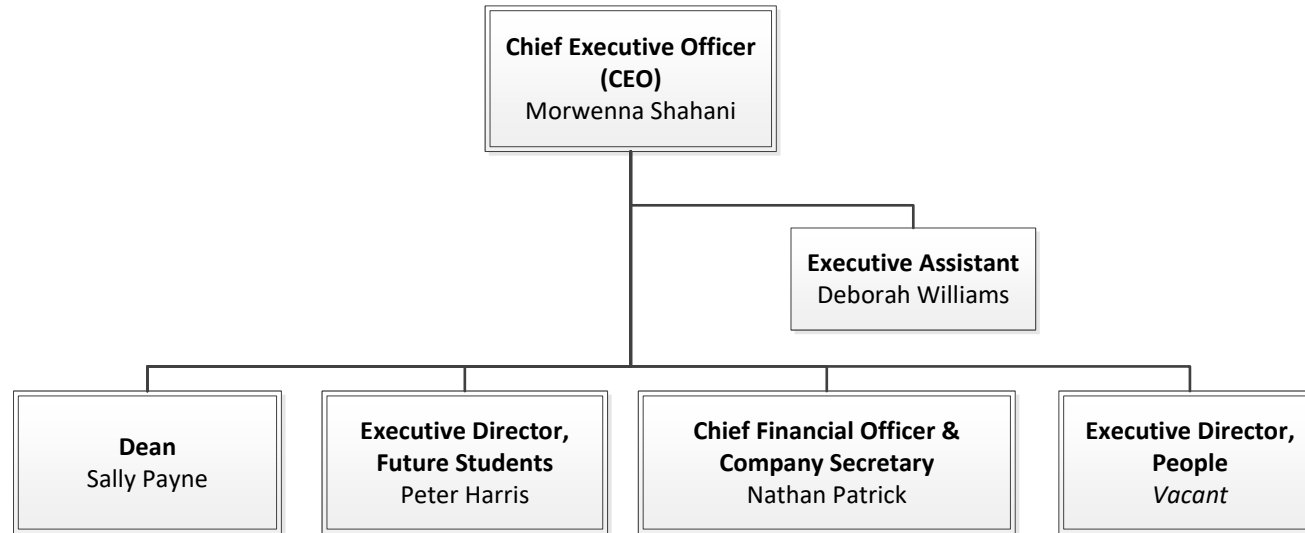


# Executive

2/07/2024 1:22:50 PM

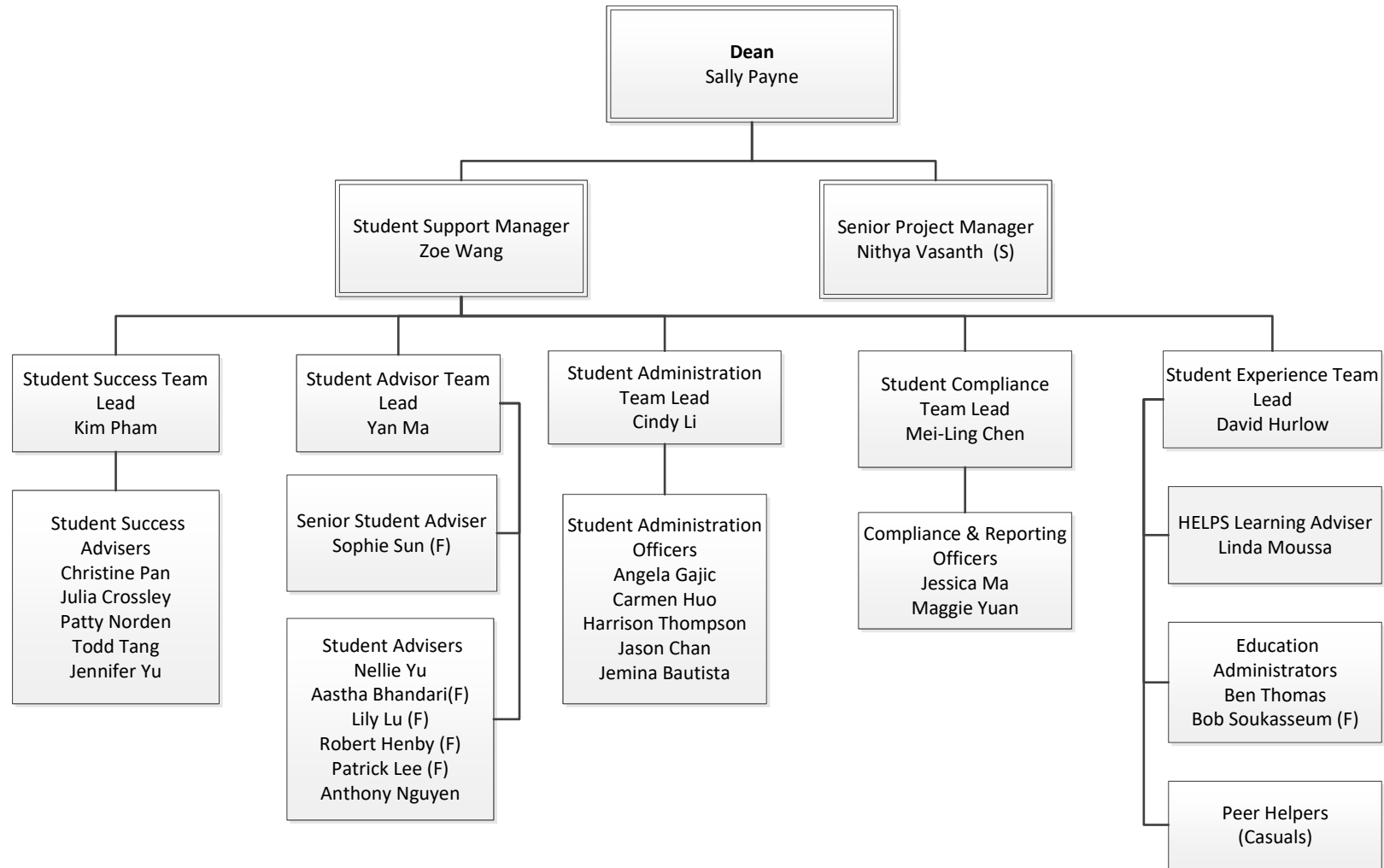


## **Abbreviation Key**

- (PT) Part -Time
- (A) Acting
- (F) Fixed Term
- (Cas) Casual
- (E/L) Extended Leave
- (C) Contractor
- (IC) Independent Contractor
- (P/L) Parental Leave
- (S) Secondment
- (T) Agency Temp

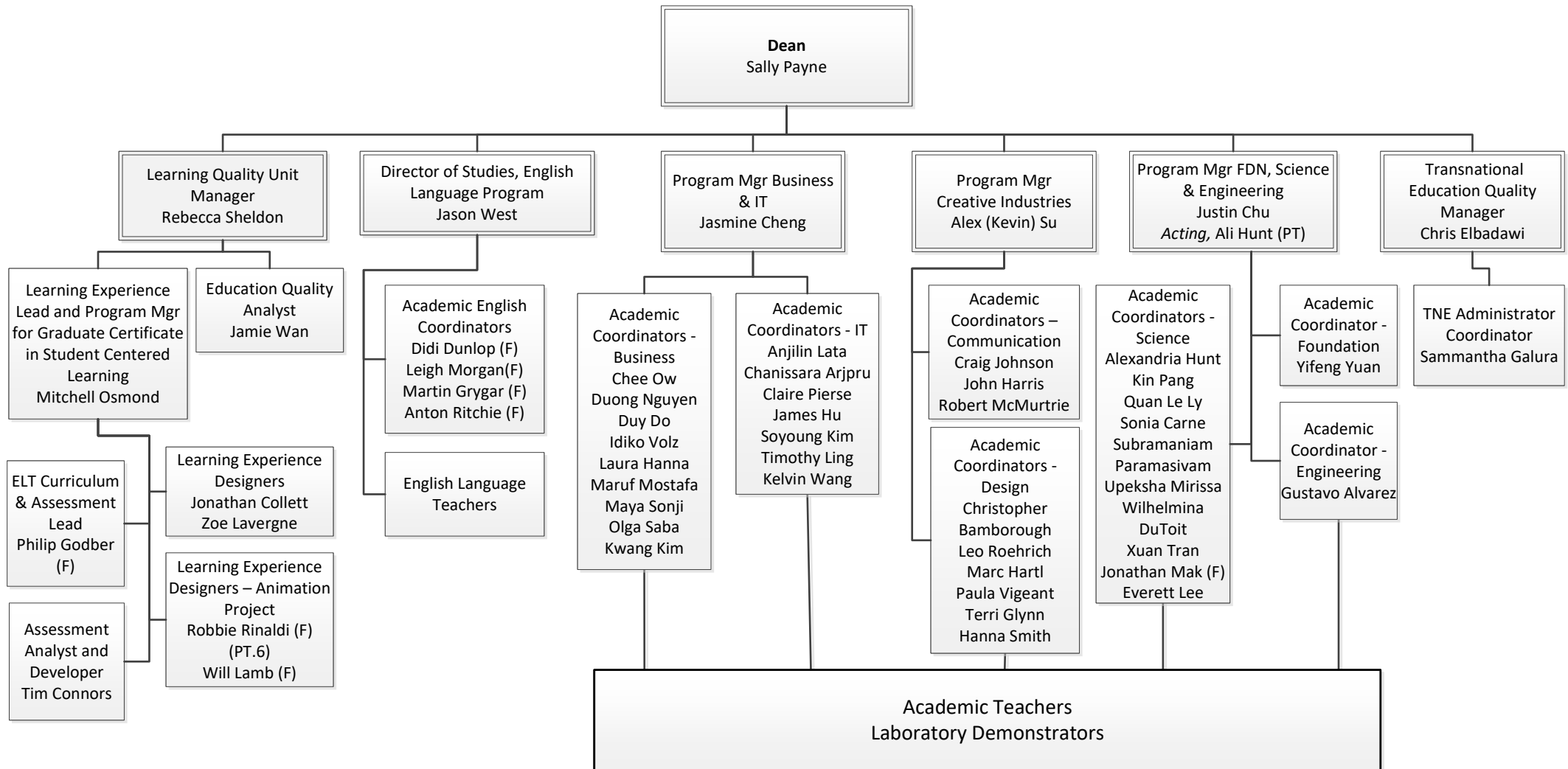
# Education

July 24, 2024



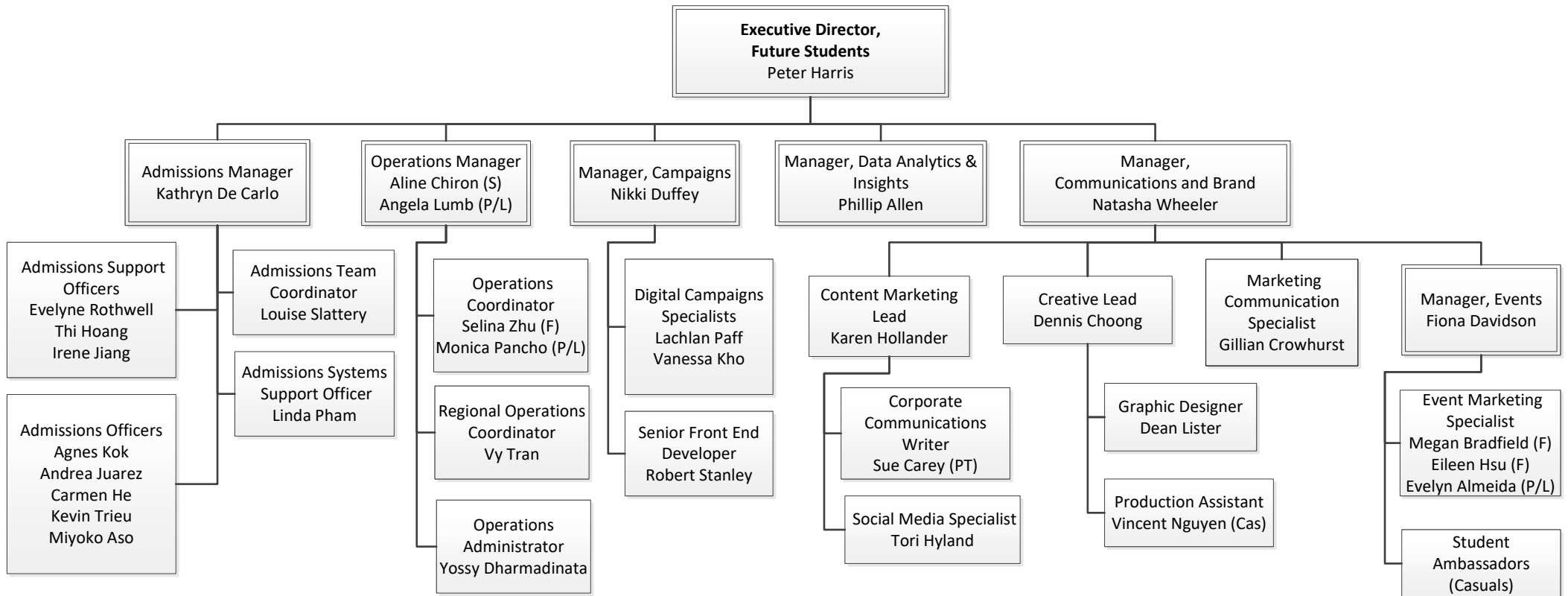
# Education

July 24, 2024



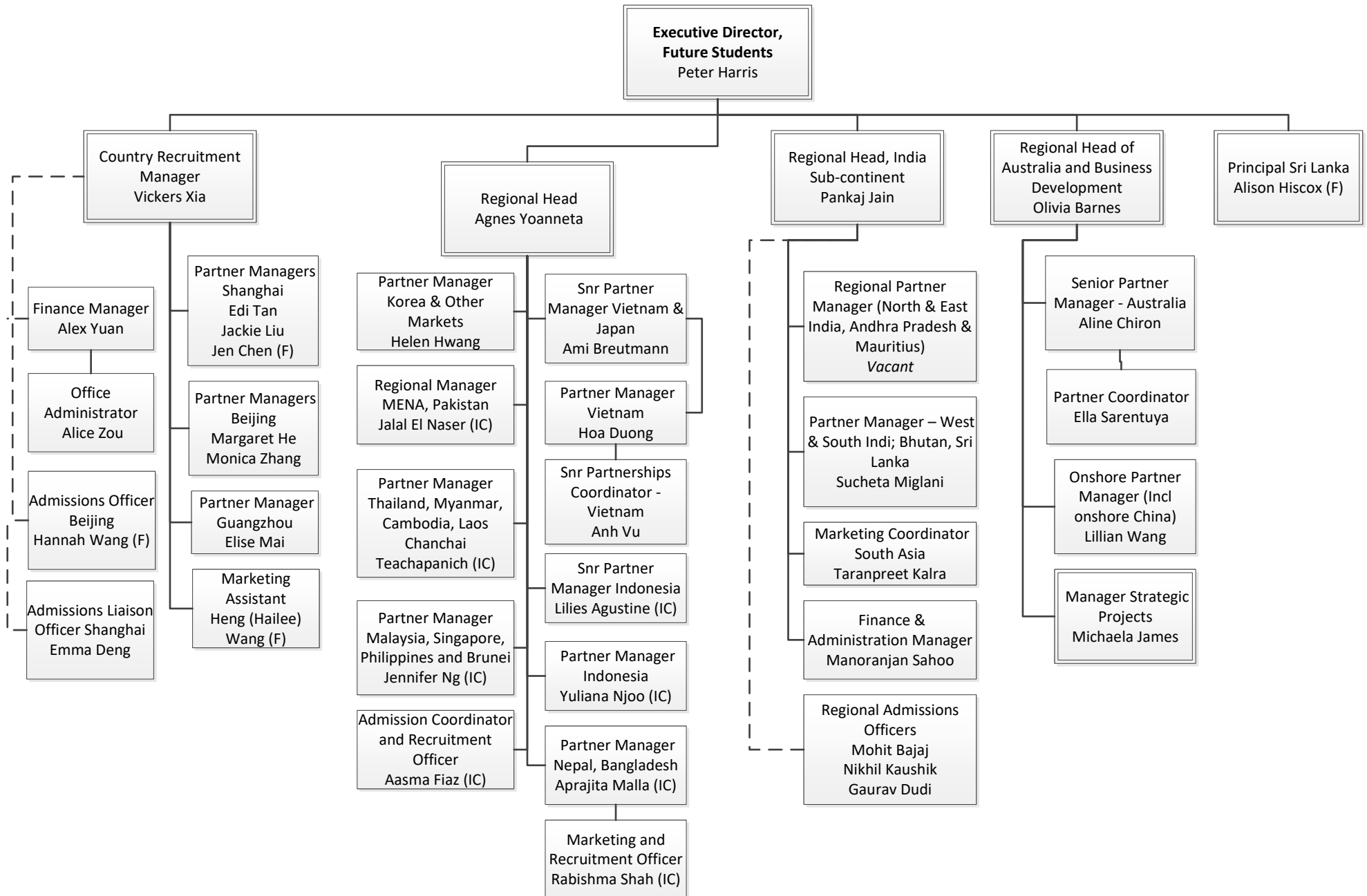
# Future Students

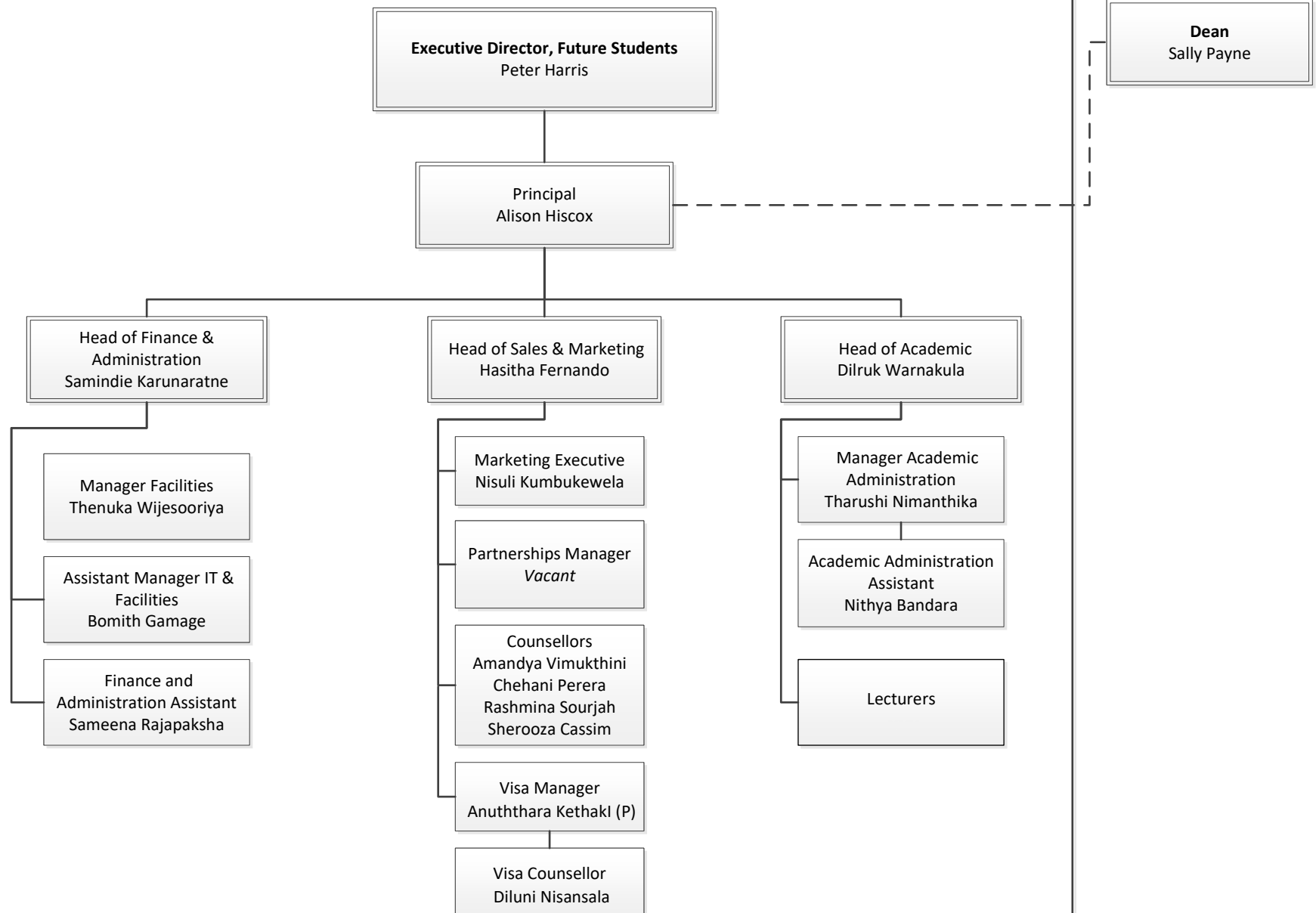
July 24, 2024



# Future Students - Regions

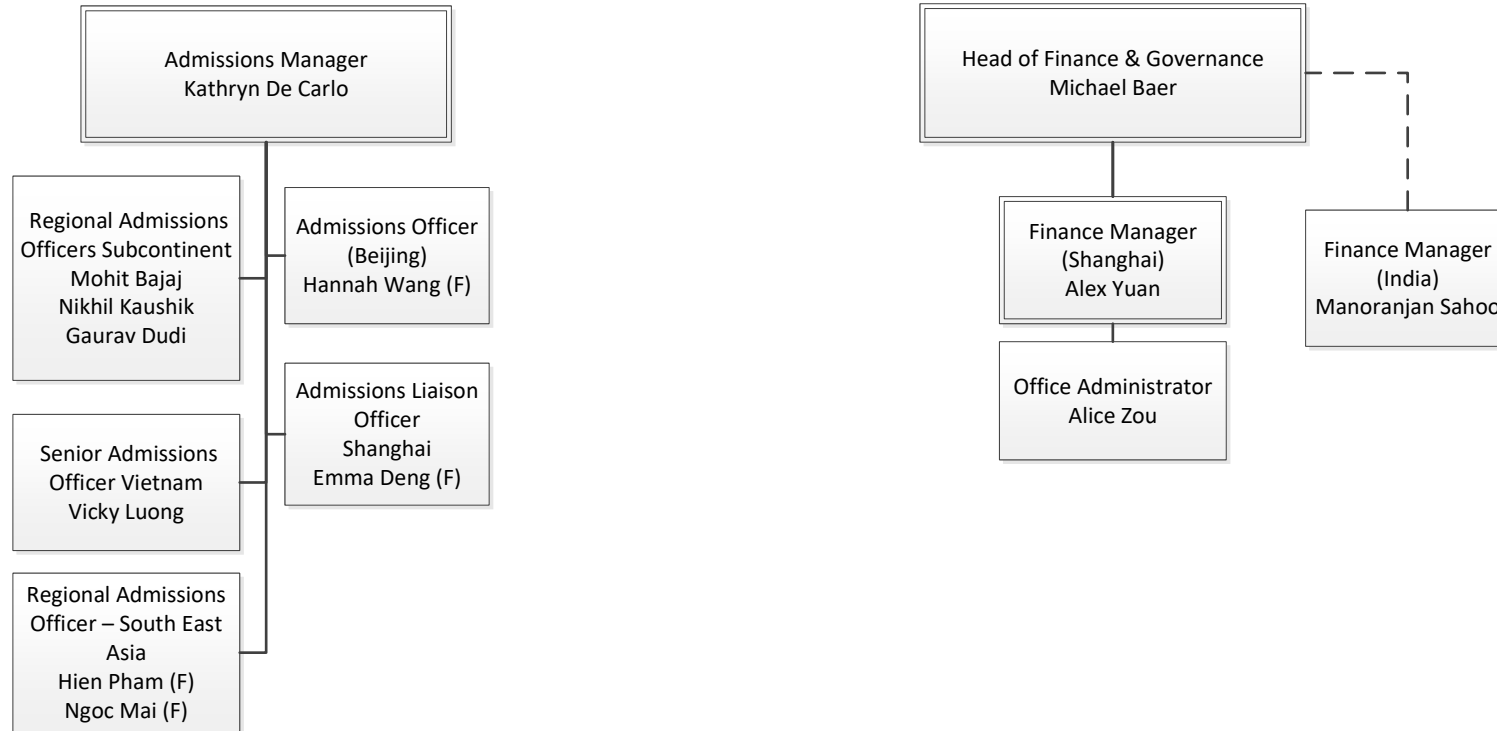
July 24, 2024





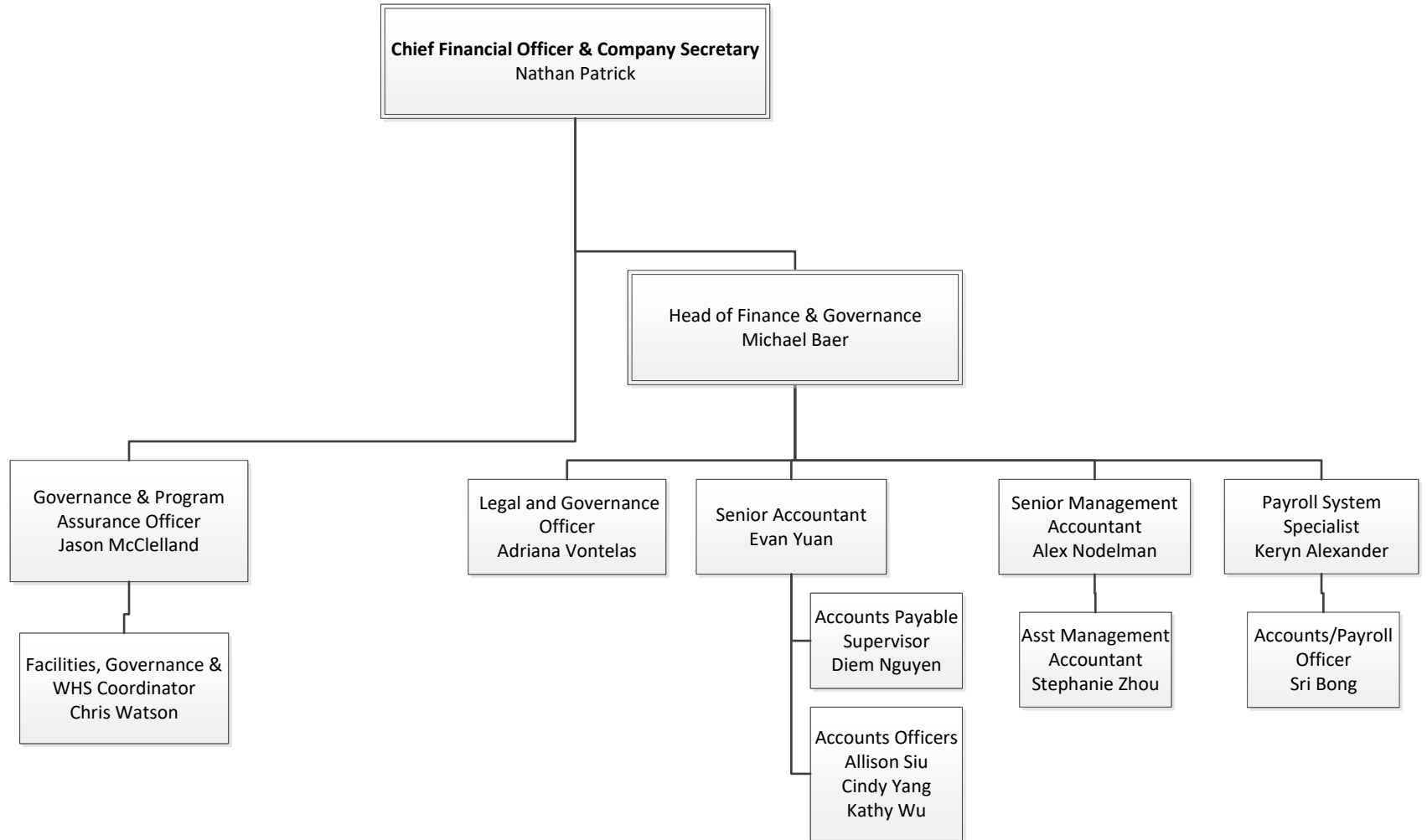
# Admissions & Finance Regional Teams

July 24, 2024



# Professional Services

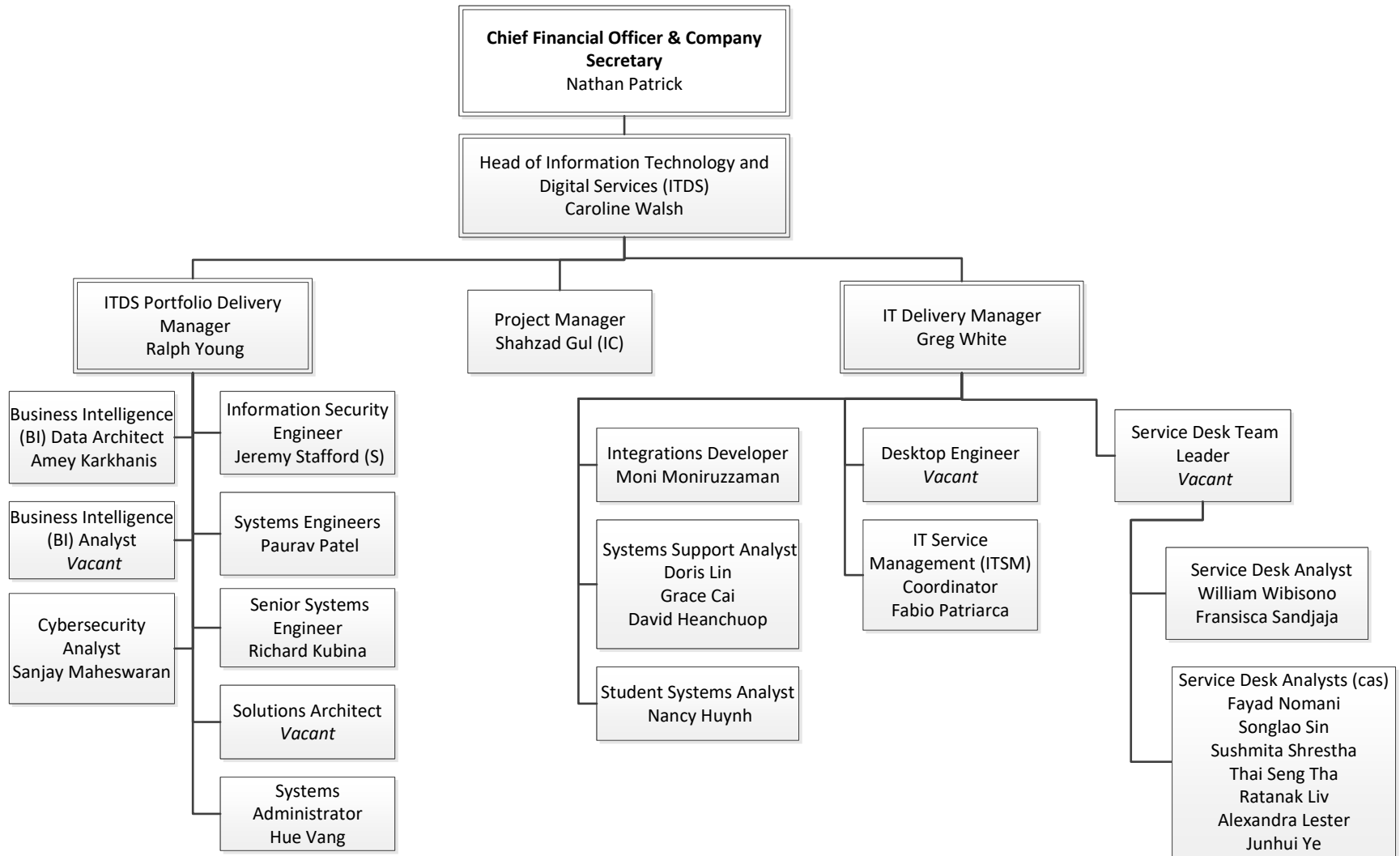
July 24, 2024





# ITDS

July 24, 2024



# People

July 24, 2024

---

